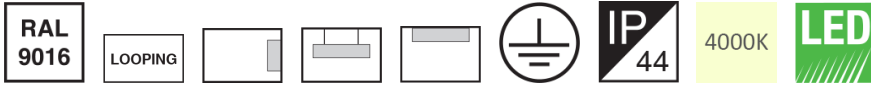


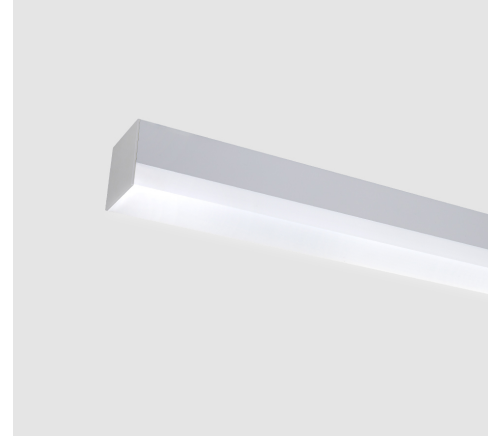
M458EL60LED1840-W

LUMINA (DOB) surface mount/suspended linear luminaire, Length: 60cm, 4000K, LED1, 950 Lumens, 12W, White



About Product

LUMINA linear luminaire is designed and manufactured by Mazinoor suitable for office and hospitality applications. Uniform light distribution, energy saving, and glare control are among the highlights of this luminaire.



Technical Information

Catalogue Code/product code: M458EL60LED1840-W

Mounting Type:	Suspended, Surface Mounted, Wall Mounted; Surface Mounted
Application:	Office, Shopping centers, Hypermarket, Hospitality, Gallery and museum
Light source type:	DOB LED (PF> 0.9)
Module/ Lamp quantity:	1
CCT (Color temperature):	4000K - Neutral White
Light source:	LED
Lumen maintenance:	> 60000 hours
Lumen maintenance factor:	L70
CRI (Color rendering index):	> 80
Power Consumption:	12
Luminous Flux:	950
Efficacy (lm/W):	79
IP (Ingress Protection):	IP44
Insulation Class:	Class I
FLICKER:	Low Flicker
Mains voltage:	200~250 VAC
Voltage Frequency:	50/60 Hz
Wire / Cable Spec:	PVC solid wire
Wire cross section:	0.5

M458EL60LED1840-W

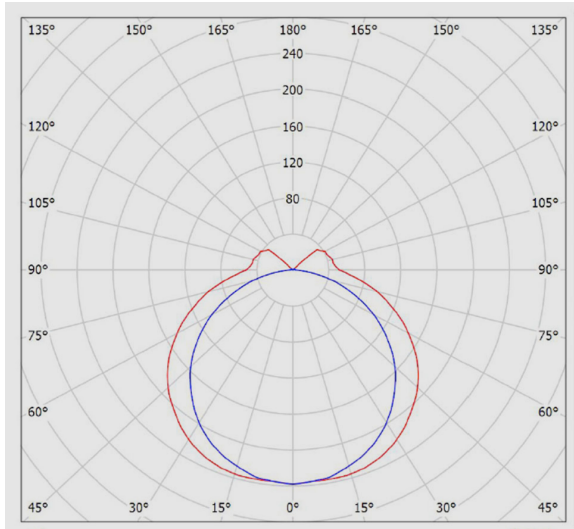
LUMINA (DOB) surface mount/suspended linear luminaire, Length: 60cm, 4000K, LED1, 950 Lumens, 12W, White

Terminal material:	Polycarbonate
Terminal Spec:	Cable looping is possible. 3-Pole (Size: 2.5), Tool free wire connection
Cable Looping:	Yes
Body Material:	Extruded aluminum profile
Body Coating:	Powder coated
Body Color:	White
RAL:	RAL9016
End Caps Material:	Polycarbonate
Diffuser/Glass Material:	Satin white PMMA (Acrylic) extruded profile diffuser
Diffuser/Glass Shape:	Satin white
Diffuser/Glass Characteristic:	UV stabilized, Uniform light distribution, High efficiency, Resistant to scratches
Light Distribution:	Uniform light distribution
Packaging type:	Nylon cover and carton
Weight(Kg):	1.1
Dimensions(mm):	600x70x70

M458EL60LED1840-W

LUMINA (DOB) surface mount/suspended linear luminaire, Length: 60cm, 4000K, LED1, 950 Lumens, 12W, White

Photometric Graph



Glare Evaluation According to UGR												
p Ceiling		70	70	50	50	30	70	70	50	50	30	
p Walls		50	30	50	30	30	50	30	50	30	30	
p Floor		20	20	20	20	20	20	20	20	20	20	
Room Size X Y		Viewing direction at right angles to lamp axis					Viewing direction parallel to lamp axis					
2H	2H	11.3	12.5	11.7	13.0	13.5	9.9	11.1	10.3	11.6	12.1	
	3H	13.5	14.6	14.0	15.1	15.6	11.4	12.5	11.9	13.0	13.5	
	4H	14.6	15.6	15.1	16.1	16.7	12.0	13.1	12.5	13.6	14.1	
	6H	15.6	16.6	16.2	17.2	17.7	12.4	13.4	12.9	13.9	14.5	
	8H	16.2	17.2	16.7	17.7	18.3	12.5	13.5	13.0	14.0	14.6	
4H	2H	11.9	13.0	12.4	13.5	14.0	10.9	11.9	11.4	12.4	13.0	
	3H	14.3	15.2	14.9	15.8	16.4	12.6	13.6	13.2	14.1	14.7	
	4H	15.6	16.4	16.2	17.0	17.6	13.4	14.2	14.0	14.8	15.4	
	6H	16.9	17.6	17.5	18.2	18.8	13.9	14.6	14.5	15.2	15.9	
	8H	17.5	18.2	18.1	18.8	19.4	14.1	14.8	14.7	15.4	16.0	
6H	2H	18.2	18.8	18.8	19.4	20.1	14.2	14.8	14.8	15.4	16.1	
	4H	15.9	16.6	16.5	17.2	17.8	14.1	14.7	14.7	15.3	16.0	
	6H	17.4	18.0	18.0	18.6	19.3	14.9	15.4	15.5	16.0	16.8	
	8H	18.2	18.7	18.9	19.4	20.1	15.2	15.7	15.8	16.3	17.0	
	12H	19.1	19.5	19.8	20.2	21.0	15.4	15.8	16.0	16.5	17.2	
12H	4H	15.9	16.5	16.5	17.1	17.8	14.2	14.8	14.8	15.4	16.1	
	6H	17.5	18.0	18.1	18.6	19.4	15.1	15.6	15.8	16.3	17.0	
	8H	18.4	18.8	19.1	19.5	20.2	15.6	16.0	16.2	16.7	17.4	
Variation of the observer position for the luminaire distances S												
S = 1.0H		+0.1 / -0.1					+0.1 / -0.1					
S = 1.5H		+0.2 / -0.2					+0.2 / -0.3					
S = 2.0H		+0.3 / -0.4					+0.4 / -0.6					
Standard table		BK10					BK14					
Correction		2.6					-1.1					
Summand												
Corrected Glare Indices referring to 950lm Total Luminous Flux												

Dimensional Drawing

