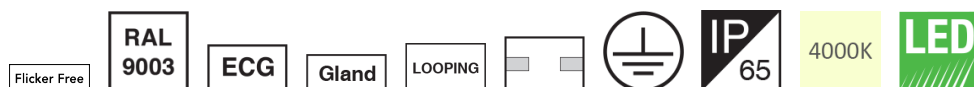


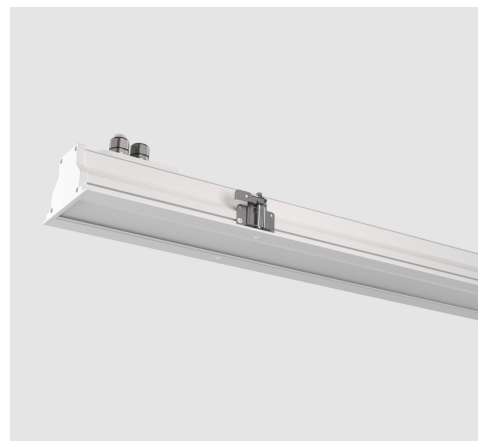
M441SM115SLED2840-W

SEALA MRT continuous linear luminaire, Matt tempered glass, Length: 115cm, 4000K, LED2, 3500 Lumens, 32W, White



About Product

SEALA MRT recessed light bar is Mazinoor state of the art design for mass rapid transit suitable for subway platforms. Sturdy body, flexibility of installation, ease of maintenance, vibration and shock resistance, and high ingress protection (IP65) are among the highlights of this luminaire.



Technical Information

Luminaire Name:	SEALA-MRT
Catalog Code/product code:	M441SM115SLED2840-W
Mounting Type:	Recessed-Gypsum false ceiling
Application:	Subway, Industrial area
Light source type:	LED
Module/ Lamp quantity:	2
CCT (Color temperature):	4000K - Neutral White
Light source:	LED
Lumen maintenance:	> 100.000 hours
Lumen maintenance factor:	L70
CRI (Color rendering index):	> 80
Power Consumption:	32
Luminous Flux:	3500
Efficacy (lm/W):	109
IP (Ingress Protection):	IP65
Insulation Class:	Class I
Max. Ambient Temperature:	45°C
Min. Ambient Temperature:	-20°C
Ballast/ Driver:	Constant Current Driver (PF> 0.9)
FLICKER:	Flicker Free

M441SM115SLED2840-W

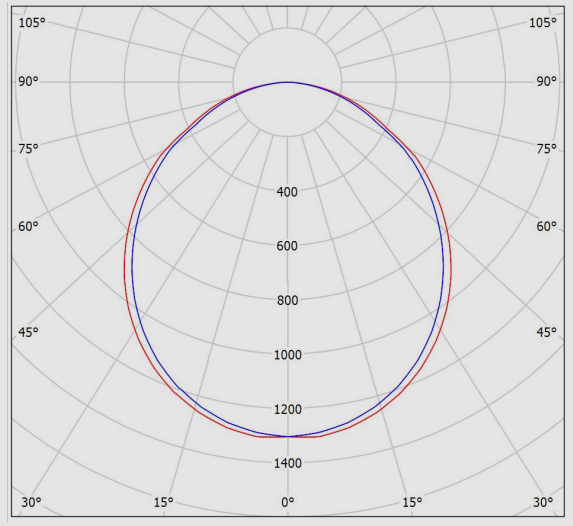
SEALA MRT continuous linear luminaire, Matt tempered glass, Length: 115cm, 4000K, LED2, 3500 Lumens, 32W, White

Ballast/ driver Spec:	Non-dimmable
Ballast/ Driver (Channel quantity):	Single channel
Mains voltage:	220~240 VAC±10%
Voltage Frequency:	50/60 Hz
Wire / Cable Spec:	GF silicon solid wire
Wire cross section:	0.5
Terminal material:	Porcelain
Terminal Spec:	3-Pole (Size: 2.5)
Cable Looping:	Yes
Cable Gland Spec:	Brass
Cable gland type:	PG13.5
Body Material:	Extruded aluminum profile
Body Coating:	Powder coated
Body Color:	White
RAL:	RAL9003
End Caps Material:	Die-Cast aluminum
Diffuser/Glass Material:	Tempered glass
Diffuser/Glass Shape:	Matte painted on one side (Sandblast design)
Diffuser/Glass Characteristic:	4mm thickness. Uniform light distribution
Light Distribution:	Uniform light distribution
Clamp Material:	Galvanized steel sheet
Clamp Characteristic:	Rotational system for mounting in ceilings with different thickness
Packaging type:	Nylon cover and carton
Weight(Kg):	4
Dimensions(mm):	1160x200x110
Luminaire mechanical impact resistance:	-

M441SM115SLED2840-W

SEALA MRT continuous linear luminaire, Matt tempered glass, Length: 115cm, 4000K, LED2, 3500 Lumens, 32W, White

Photometric Graph



Glare Evaluation According to UGR												
p Ceiling		70	70	50	50	30	70	70	50	50	30	
p Walls		50	30	50	30	30	50	30	50	30	30	
p Floor		20	20	20	20	20	20	20	20	20	20	
Room Size X Y		Viewing direction at right angles to lamp axis					Viewing direction parallel to lamp axis					
2H	2H	18.7	20.0	19.0	20.3	20.5	19.6	20.9	19.9	21.2	21.4	
	3H	19.7	20.9	20.1	21.2	21.5	20.9	22.1	21.2	22.3	22.6	
	4H	20.1	21.2	20.5	21.5	21.8	21.4	22.5	21.8	22.8	23.1	
	6H	20.3	21.4	20.7	21.7	22.0	21.8	22.8	22.1	23.1	23.4	
	8H	20.4	21.4	20.7	21.7	22.0	21.9	22.9	22.2	23.2	23.5	
	12H	20.4	21.3	20.8	21.7	22.0	21.9	22.9	22.3	23.2	23.5	
4H	2H	19.3	20.4	19.6	20.7	21.0	20.0	21.1	20.4	21.4	21.7	
	3H	20.5	21.4	20.8	21.7	22.1	21.4	22.4	21.8	22.7	23.0	
	4H	20.9	21.8	21.3	22.1	22.5	22.1	22.9	22.5	23.2	23.6	
	6H	21.3	22.0	21.7	22.4	22.8	22.5	23.2	22.9	23.6	24.0	
	8H	21.3	22.0	21.8	22.4	22.8	22.7	23.3	23.1	23.7	24.1	
	12H	21.4	22.0	21.8	22.4	22.8	22.7	23.3	23.2	23.7	24.2	
8H	4H	21.1	21.8	21.6	22.2	22.6	22.2	22.9	22.6	23.2	23.7	
	6H	21.6	22.1	22.0	22.5	23.0	22.7	23.3	23.2	23.7	24.1	
	8H	21.7	22.2	22.2	22.6	23.1	22.9	23.4	23.4	23.8	24.3	
	12H	21.7	22.1	22.2	22.6	23.1	23.0	23.4	23.5	23.9	24.4	
	4H	21.2	21.8	21.6	22.2	22.6	22.2	22.8	22.6	23.2	23.6	
	6H	21.6	22.1	22.1	22.5	23.0	22.7	23.2	23.2	23.7	24.1	
12H	8H	21.7	22.1	22.2	22.6	23.1	22.9	23.3	23.4	23.8	24.3	
	12H	21.7	22.1	22.2	22.6	23.1	22.9	23.3	23.4	23.8	24.3	
Variation of the observer position for the luminaire distances S												
S = 1.0H		+0.2 / -0.2					+0.1 / -0.1					
S = 1.5H		+0.4 / -0.6					+0.3 / -0.4					
S = 2.0H		+0.7 / -1.2					+0.8 / -1.0					
Standard table		BK04					BK05					
Correction Summand		4.1					5.8					
Corrected Glare Indices referring to 3500lm Total Luminous Flux												

Dimensional Drawing

